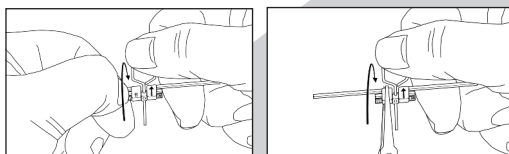


INSTRUCTIONS

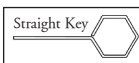
TORKO™ SUPER LINGUAL EXPANSOR® SCREW



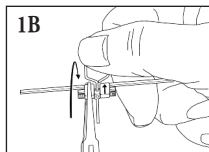
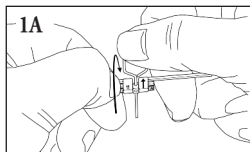
INSTRUCTIONS FOR THE TORKO™ SUPER LINGUAL EXPANSOR® SCREWS

IMPORTANT: OPEN EXPANSOR ONE FULL TURN PRIOR TO CONSTRUCTION OF THE APPLIANCE.

Due to the precision matching of the Expansor parts, some may not open as easily as others. There are now 2 methods for the initial opening of the Expansor®:



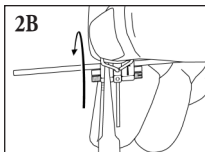
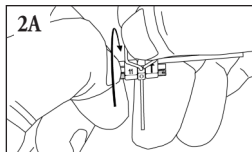
Method 1) Hold the body of the Expansor® with your hand or a flat nose plier (w/ serrated tips), insert the straight key HALF WAY through the hole. Turn the key firmly in the direction of the arrows located on the body of the



Expansor® using your thumb and index finger to unlock the Muscle Thread®, as demonstrated in illustrations # 1A & 1B.

Method 2) Hold the body of the Expansor® with your hand or a flat nose plier (w/ serrated tips), insert the straight key ALL THE WAY through the hole until the head of the key comes to a stop against the body of the Expansor®. Turn the key firmly in the direction of the arrows located on the

Expansor® by using your thumb, index and middle finger to unlock the Muscle Thread®, as demonstrated in illustrations # 2A & 2B



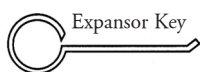
Note: The unique strength of the Muscle Thread® prevents slippage during the treatment process. Expect firm resistance during initial Expansor activation. If you are using this type of Expansor on a regular basis, please consider purchasing the Pozzi Straight Tip Activator (Grp/Item #019-19-RPE1).

3) TURN BACK GENTLY AND CONSTRUCT YOUR APPLIANCE.

4) Use Leone® Thermo Insulator Paste (Grp/Item #826-R0227-01) to protect the Expansor from being damaged by excess heat during soldering. The paste also protects plaster and resin, has excellent consistency and is easy to remove with water.

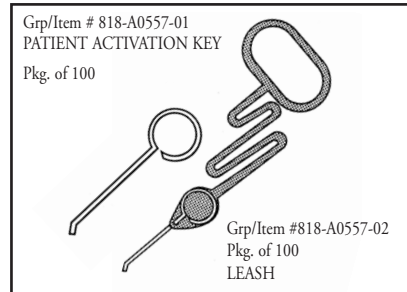
5) The expansion capacity of Grp/Item #818-A0623-08 is 8 mm as is Grp/Item #818-A1623P08 (Medium Arms - each 8 mm longer). The expansion capacity of Grp/Item #818-A0623-11 is 11 mm. The arrow indicates the opening direction.

FOR BEST RESULTS: We advise professionals who fabricate expansion devices to select the Expansor in the largest size available for the case. We leave it up to the specialist to choose the correct Expansor before constructing the appliance. We do not warrant that all sizes can cover the complete spectrum of needs for the surgical application.



6) The stainless steel Expansor key (shown at right) and the leash are supplied with every device. The tip of the key is fabricated with a 45 degree bend to facilitate the activation of the Expansor while it is in the mouth.

6) The stainless steel Expansor key (shown at right) and the leash are supplied with every device. The tip of the key is fabricated with a 45 degree bend to facilitate the activation of the Expansor while it is in the mouth.



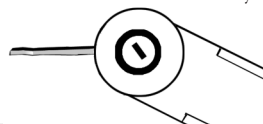
OTHER USEFUL EXPANSOR® SCREW ACCESSORIES

Pozzi Expansor Swivel Key

Developed for adjustments to Rapid Palatal Expanders after the initial activation has been accomplished.

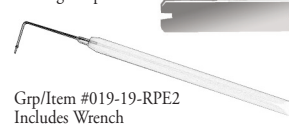
Place the tip of the instrument into the most anterior hole and slowly push towards the palate until the next anterior hole appears. The tip will swivel around the plastic button to allow the appliance to expand.

- Grp/Item # Description
- 019-19-SKEYB Rapid Palatal Expansor Safety and Extension Key Pack of 1.
 - 019-19-SKEY10B Rapid Palatal Expansor Safety and Extension Key Pack of 10.



Pozzi Clinical Expansor (Patented)

An innovative new instrument used for advancing expanding appliances intra-orally with a lateral approach. Because of the unique construction of this instrument, the 90° activating tip is easily inserted into the most anterior hole without obstruction to the appliance. Once the instrument is properly seated in the screw, the handle is turned to provide activation. The stainless steel tip has a stop mechanism to prevent the tip from touching the palate.



Pozzi Straight Tip Activator (patented)

Use the Pozzi Straight Tip Activator for the initial expansion prior to fabricating the appliance. The straight tip instrument must be inserted half way through the hole and given a hard turn using the thumb and forefinger. Turn in the direction of the arrows located on the Expansor. Hardened stainless steel tip is removable, however both tip and cone socket handle are completely sterilizable up to 350° F. The handles are light weight and durable with a comfortable "no-slip" grip.

Grp/Item #019-19-RPE1 (includes wrench)

Expansor® Screw, Muscle Thread®, & Torko™ Super Lingual Expansor® Screw are trademarks of American Tooth Industries. Expansor® Screw & Torko™ Super Lingual Expansor® Screw are available only through licensed dealers or directly from American Tooth Industries and it's Sales Divisions.

Rev. 8/04

QUESTIONS?

Call (national) 800-235-4639 OR
(CALIFORNIA) 805-487-9868 • Fax (805) 483-8482

Pozzi® and LeoneAmerica™
Brand Divisions of
American Tooth Industries
1200 Stellar Drive • Oxnard, CA 93033-2404
E-mail: info@americantooth.com
www.americantooth.com